

# Bingo! The Search Takes Shape!

## Sconce Launches Bingo! in PTC/USER World Event 2009 at Orlando!



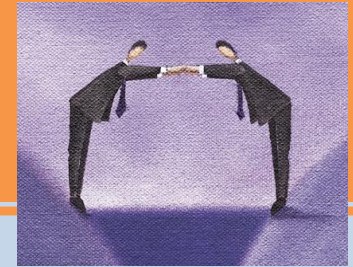
PTC PartnerAdvantage™



Ricardo Desouza, Scott Skagerberg, Mey, Alex Kimmel, Prasad and Mathi arrived at the conference site, dressed in Sconce shirts to drive Sconce past a remarkable milestone in the history of Sconce.



**SMARTER INVESTING:**  
How BINGO! CAN HELP IN YOUR LEAN PRODUCTION OBJECTIVES...!



*The First and Flagship product of Sconce – Bingo!, was launched successfully in the PTC/USER 2009 World Event held from 7-10 Jun 2009, here in Orlando, Florida, which attracted 1569 attendees from the PTC user community..!*

Sconce booth was located next to PTC's central exhibit area and was decorated with the backdrop of two tall blue pedestal posters, one summarizing service profile of Sconce and another highlighting Bingo!. There was a large screen continuously projecting a set of Bingo! movies demonstrating its key functionalities and features.

When the exhibit area opened at 6pm on Sunday 7<sup>th</sup> June 2009, Sconce booth attracted a large number of PTC users/customers. At times 2 to 3 sets of demonstrations and discussions were going on in parallel. There were overwhelming interests shown by the visitors on the features, power, and capabilities of Bingo!. Everyone was excited by the technology and appreciated the value it would bring to their business..!

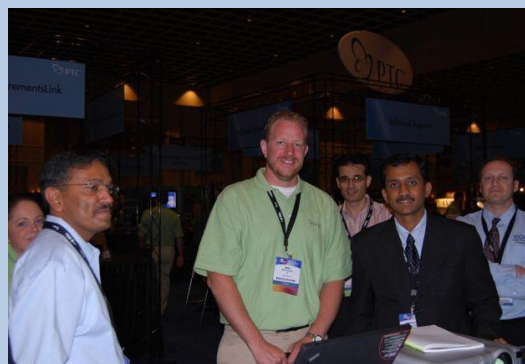
Excited by the positive response, Mey, CEO, Sconce said "It's encouraging sign for Sconce that even in this downturn, we had a few hundred visitors turning up to the booth, with a good number of prospects in that list", while responding to questions from MCAD Café journalist. (For full interview, please search for "Sconce" in <http://www.mcadcafe.com/video/>).

Mathi, product owner and VP (Products), presented Bingo! to a group of keen audience on Tuesday afternoon in the session titled: "Intuitive Shape Search: An Integrated Approach for Design Reuse" in which he emphasized the multiple avenues of value addition from Bingo!.

During this PTC/USER World Event 2009, key management representatives from PTC visited Sconce's booth.



Jim Heppelmann, President and COO, PTC, visited Sconce booth to watch Bingo! in action. He remarked "Interesting...! Looks good..!" at the end of the demonstration.



Mike Campbell, SVP Product Management, PTC, allocated time to witness a live demonstration of Bingo!, appreciated its features and was impressed by the integration of Bingo! with ProductPoint@.

Sconce Solutions, a global service provider of MCAD and PLM solutions, has developed Bingo! – An innovative search mechanism for identifying and retrieving 3D CAD components from a repository based on 2D/3D shape inputs.

Bingo!, tightly integrated with PDMLink®, Pro/ENGINEER® and ProductPoint®, enables users to intuitively search and reuse engineering designs throughout the product life cycle. Immediate benefit of installing Bingo! would be to have your engineering data automatically classified. Bingo! gives a new perspective for PLM data for both users and management. Bingo! is not only a search tool but would also help the PLM administrators to monitor and control duplicates.

Scalable and Extendable architecture of Bingo! will open up a new wave of opportunities to create add-on applications to further enhance the productivity of your engineering organization.

*If you have any questions, or to request Demo presentation or just tell us how excited you are about Bingo!, please visit our website:*

[www.sconcesolutions.com](http://www.sconcesolutions.com)